

2 Aitken Street

Project Update 13

7th December 2017



Progress to date

0%

100%

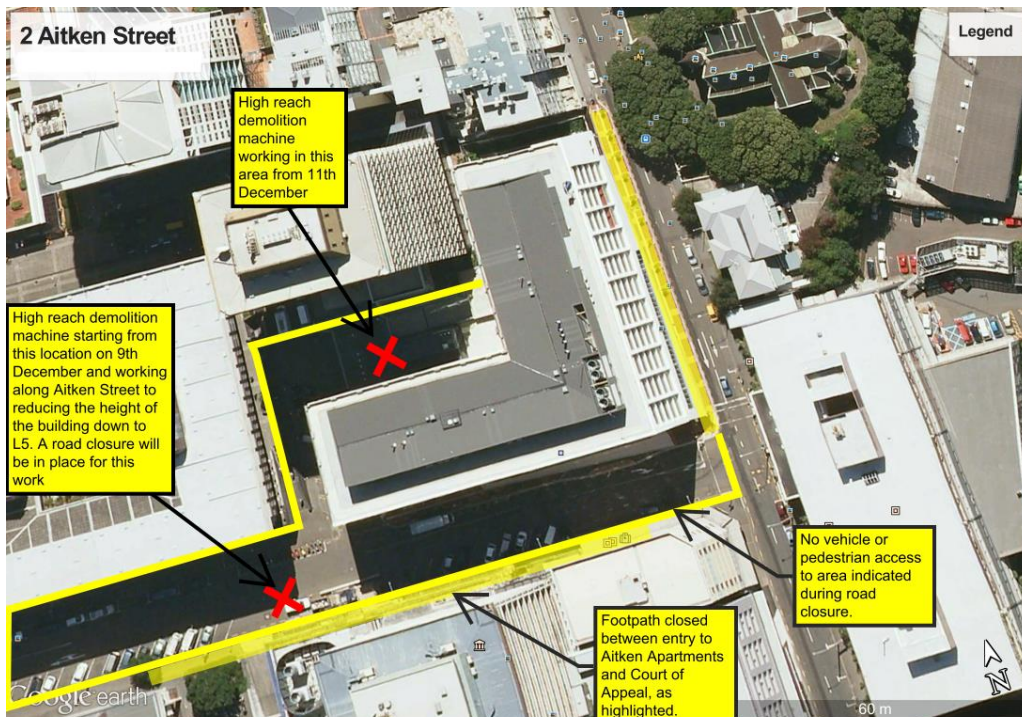
Project Headlines

- > Our large crawler crane has been dismantled and removed from site.
- > Our high reach demolition machine is now on site and being assembled.
- > All perimeter scaffolding has now been removed and final clear out of building has occurred ahead of high reach demolition work.

Project look ahead

- > This week end on Saturday 9th December the high reach demolition work commences. At this time Aitken street will be closed (Saturday & Sunday) to all vehicles and pedestrian access will be restricted. The high reach machine will be positioned adjacent to the site sheds and work its way along Aitken Street, reducing this portion of the building down to L5.
- > From Monday 11th December the high reach machine will be positioned around the back of the building and reducing this section of the building down to L5.
- > On Saturday 16th & Sunday 17th December Aitken Street will be closed again while the high reach machine reduces the height of the building adjacent to Guthrie lane.

Planned works to mid December:



Key Items to Note:

- > We will have a road closure in place on Aitken Street on Sat 9th, Sun 10, Sat 16th, and Sun 17th December for our next stages of work.
- > During the above road closures pedestrian access along Aitken Street will also be restricted adjacent to site. We thank you for your cooperation with this.

Project inquiries

- > Please contact the liaison person for this project within your organisation.