

Project Update 05

28th August 2017



0%

Progress to date

100%

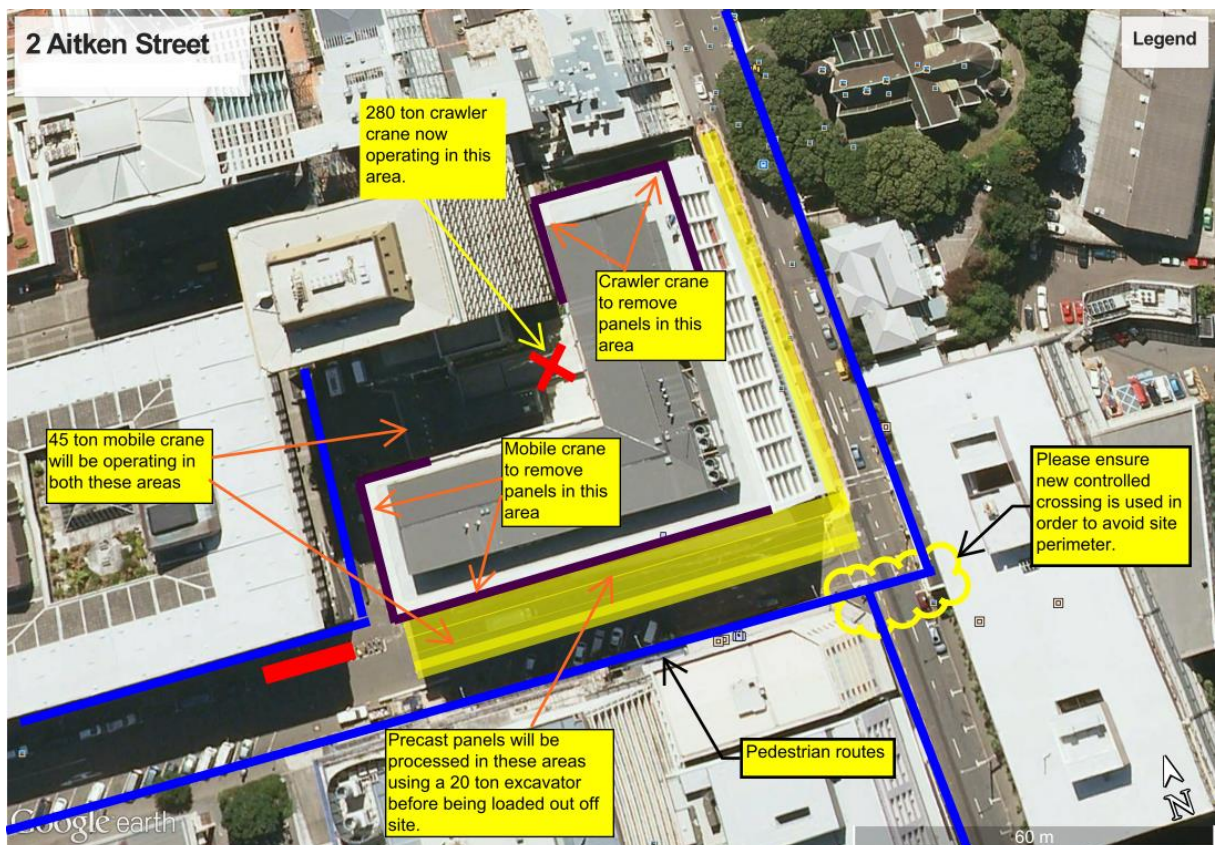
Project Headlines

- > Internal strip out of L3 - 7 is now complete.
- > The 280t crawler crane has been assembled and moved into position on newly formed crane pad at the rear of the building.
- > Removal of all canopies is now complete.
- > Removal of window glazing has commenced ahead of precast panel removal.

Project look ahead

- > Removal of window glazing will carry on over the next period.
- > Removal of precast concrete façade panels will commence this week in the areas marked below. This will involve both the mobile and the crawler cranes removing panels. The panels will be processed in our Aitken street loading bay before being removed from site.
- > An opening in the roof top plant room will be created and strip out of this space will commence this week.

Planned works through to mid September:



Key Items To Note:

- > While precast panels are removed adjacent to Guthrie lane Stop-Go traffic management will be in place for this operation.
- > While the precast panels are removed from LG-roof on the Mulgrave street elevation, a single lane closure will be in place during off peak times.

Project inquiries

- > Please contact the liaison person for this project within your organisation.