

We're improving Hawkestone Street for you

WORKS UPDATE

March 2019



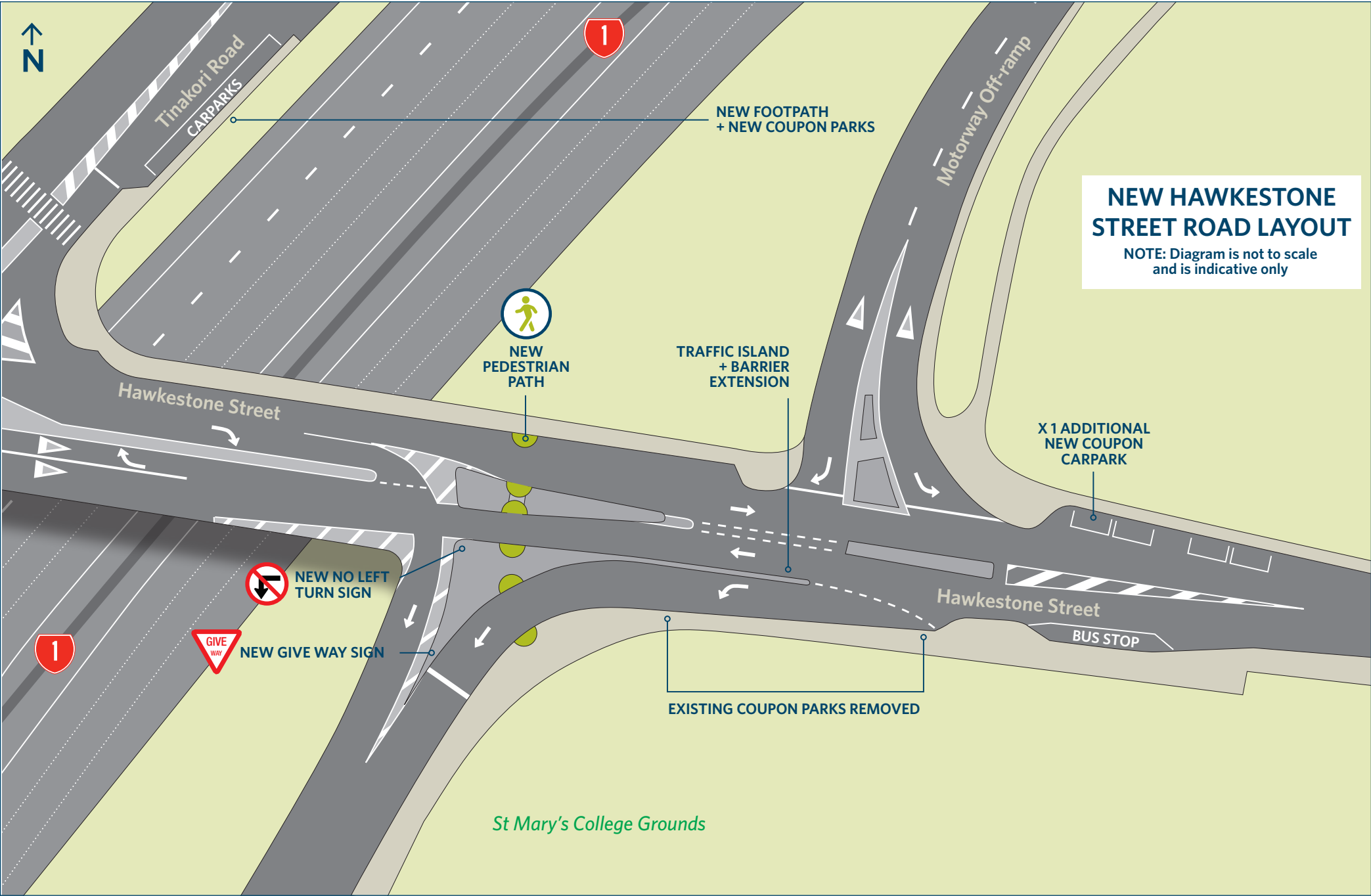
The NZ Transport Agency and Wellington City Council are making changes to the Hawkestone Street intersection so it's efficient and safe for all road users, commuters and pedestrians.

The problem

Some commuters use the Hawkestone Street intersection as a shortcut to skip ahead of queues when travelling southbound on the SH1 motorway, particularly during morning commuter traffic. This creates delays for other commuters who are travelling southbound on the SH1 motorway, creates congestion and poses a safety risk to road users on Hawkestone Street including other commuters and pedestrians.

The solution

To manage this, we will make improvements to the layout of the Hawkestone Street intersection. The changes will improve traffic flow along Hawkestone Street and prevent urban motorway commuters from using the intersection as a shortcut.



Road changes:

- The shape of the traffic island on Hawkestone Street will be altered so it extends around the entry to the southbound on-ramp. This will mean vehicles can only enter the on-ramp from Hawkestone Street and won't be able to enter from the SH1 off-ramp anymore.
- A new give way intersection on the on-ramp will make merging safer and more efficient.
- The central median area next to the on-ramp on Hawkestone Street will be raised to create a traffic island and pedestrian refuge.
- A new pedestrian path across Hawkestone Street so it's safer and easier to cross.

Parking changes:

- The coupon carparks near Hawkestone Street on-ramp will be removed and replaced with new coupon parks on Tinakori Street.
- One new coupon carpark will be added opposite the bus stop.

New road layout and parking changes timeframes

We are planning on introducing the new road layout from 18 March.

During the introduction of this new road layout, we will install flexible bollards or 'safe hit posts'. These are a fluorescent colour and have reflective tape to make them visible to all road users, both day and night.

We will carefully monitor pedestrian and road user behaviour in response to the new layout. This will help us determine the success of the new road layout and identify any unforeseen issues before making the improvements permanent.

Once we are certain that the road layout works, we will remove the flexible bollards and install the permanent road layout using concrete. The parking changes will also be made during the permanent construction phase.

Construction timeframes and noise

The construction of the introductory layout is expected to take two nights (18 March – 20 March, 7pm – 5am) and will be in place for a minimum of three weeks while we monitor behaviour. The final construction layout is expected to take five nights (7 April – 12 April, 7pm – 5am). During construction, crews will be on site from 7pm – 5am.

Local residents should expect some noise during construction. Please note these works are weather dependant, and dates could change.

Thanks for your patience and understanding while we make Hawkestone Street safer and more efficient for you.

Contact us

Visit www.nzta.govt.nz/hawkestone for updates, or follow NZTA Wellington on Facebook and Twitter.



facebook.com/nztawgtn



twitter.com/nztawgtn



hawkestonestreet@nzta.govt.nz