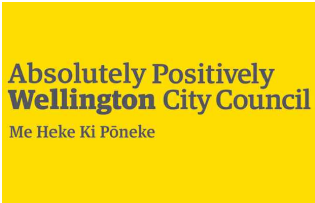


**SIGNAL LAYOUT PLAN**  
SCALE 1:100 @ A1

REVISION	AMENDMENT	APPROVED	DATE
A	DRAFT FOR COMMENT	C.G.	2022-12-09



90% DESIGNS

SCALES	ORIGINAL SIZE
1:100 (A1) 1:200 (A3)	A1
DRAWN	DESIGNED
C. GAONA DUSSAN	C. GROOM
DRAWING VERIFIED	APPROVED DATE
C.GROOM	J. PAYNE 2022-12-09

DRAFT FOR COMMENT

PROJECT	WELLINGTON CITY COUNCIL MULGRAVE / MOLESWORTH CYCLEWAY
TITLE	MURPHY ST MIDBLOCK CROSSING SIGNAL LAYOUT PLAN (i=035)
WSP PROJECT NO. (SUB-PROJECT)	5-C3880.32
SHEET NO.	C111
REVISION	A

**NOTES:**

**GENERAL**

- ALL WORK TO BE IN ACCORDANCE WITH WAKA KOTAHĪ P43 SPECIFICATION FOR TRAFFIC SIGNALS.
- ALL TTM TO BE IN ACCORDANCE WITH NZTA REQUIREMENTS AND APPROVED TMP
- FINAL SETOUT TO BE DETERMINED BY ENGINEER ON SITE.

**SERVICES**

- UNDERGROUND SERVICES PROVIDED IN THIS DRAWING SET ARE INDICATIVE ONLY AND SHOULD NOT BE USED FOR CONSTRUCTION.
- THE CONTRACTOR SHALL ENSURE ALL UNDERGROUND SERVICES ARE LOCATED PRIOR TO CONSTRUCTION COMMENCING.

**MARKINGS, DELINEATION AND SIGNAGE**

- ALL MARKINGS, DELINEATION AND SIGNAGE ARE TO BE IN ACCORDANCE WITH THE MANUAL OF TRAFFIC SIGNS AND MARKINGS (MOTSAM), THE TRAFFIC CONTROL DEVICES MANUAL (TDM) AND ALL OTHER RELEVANT WAKA KOTAHĪ NZ TRANSPORT AGENCY SPECIFICATIONS AND WCC STANDARDS.

**TRAFFIC SIGNALS**

- TRAFFIC SIGNALS EQUIPMENT AND INSTALLATION SHALL COMPLY WITH THE P43 AND WCC SPECIFICATION FOR TRAFFIC SIGNALS.
- POLE POSITIONS ARE INDICATIVE ONLY. FINAL POSITIONS TO BE DETERMINED ON SITE BY THE ENGINEER AND CONTRACTOR.
- CONTRACTOR TO LIAISE WITH SERVICE AUTHORITIES FOR LOCATION OF SERVICES BEFORE ANY EXCAVATION.
- CONTRACTOR TO ALLOW FOR BENCH TESTING.
- DUCTS BETWEEN CHAMBERS SHALL BE 100mm DIAMETER, IF THRUSTED, TWO 100mm DUCTS TO BE INSTALLED.
- CONTRACTOR TO ALLOW FOR PERSONALITY IN LIAISON WITH WCC TOC.
- LED LANTERNS SHALL BE USED ON ALL NEW LANTERN DISPLAYS, INCLUDING PEDESTRIAN AND CYCLE DISPLAYS.
- PEDESTRIAN PUSH BUTTONS TO HAVE TACTILE VIBRATION.
- POLE FOUNDATIONS TO COMPLY WITH WCC AND WAKA KOTAHĪ SIGNAL POLE STANDARDS AND POLE MANUFACTURES REQUIREMENTS.
- THE CONTRACTOR MUST ENSURE AN ADEQUATE NUMBER OF DISPLAYS REMAIN FULLY OPERATIONAL AT ALL TIMES DURING THE WORKS. THE SIGNALS CONTRACTOR SHALL SUBMIT A DETAILED PLAN TO WCC SIGNALS STAFF BEFORE STARTING WORK DETAILING HOW THIS WILL BE ACHIEVED.

**LEGEND**

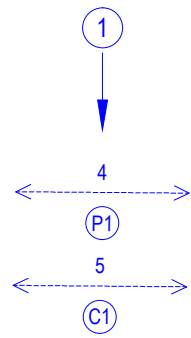
	CONTROLLER
	SIGNAL DUCT ACCESS CHAMBER
	KERB SIDE JUNCTION BOX (KJB)
	POLE AND POLE NUMBER
	POLE WITH OVERHEAD MAST ARM
	STREET LIGHT
	200mm ASPECTS - OPEN VISOR
	300mm ASPECTS - OPEN VISOR
	ASPECTS WITH CLOSED VISOR
	3 ASPECT DISPLAY
	PEDESTRIAN ASPECTS
	PEDESTRIAN CALL BOX & INPUT NUMBER
	CYCLE CALL BOX & INPUT NUMBER
	2 ASPECT CYCLE DISPLAY
	RADAR DETECTION
	CCTV CAMERA
	50mmØ DUCTING
	100mmØ DUCTING
	DETECTOR LOOP - STOPLINE LOOP & LOOP NUMBER
	EXISTING TO BE RETAINED
	EXISTING TO BE REMOVED OR ABANDONED
	EXISTING TO BE RELOCATED
	NEW ITEM OR LOCATION

**WORK IN PROGRESS**

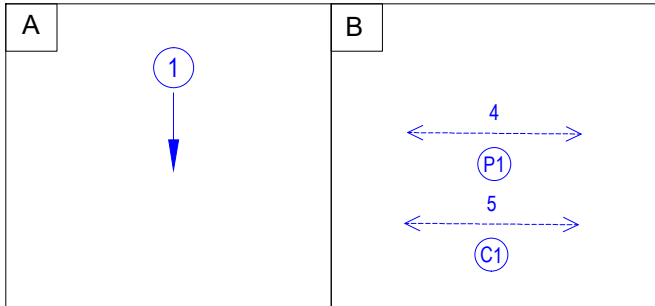
PRINTED 12/12/2022 2:38:49 pm

300 mm  
200  
100  
50  
0 10 mm

SIGNAL GROUPS



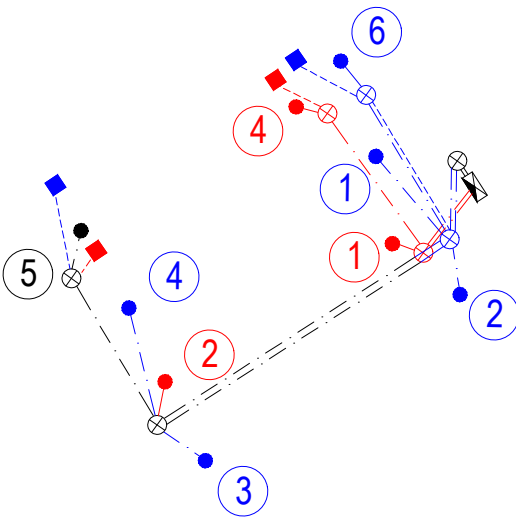
PHASING CONFIGURATION



LEGEND

- CONTROLLER
- SIGNAL DUCT ACCESS CHAMBER
- KERB SIDE JUNCTION BOX (KJB)
- POLE AND POLE NUMBER
- 50mmØ DUCTING
- 100mmØ DUCTING
- Traffic Signal Cable

DUCTING SCHEMATIC

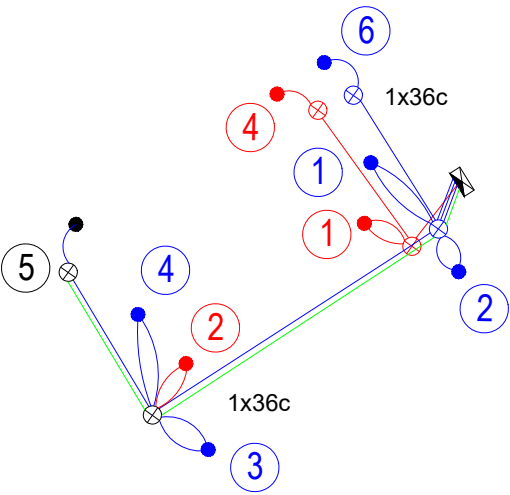


SIZE AND CONDITION OF DUCTS TO BE CONFIRMED ON SITE

CABLING SCHEMATIC

CABLE SEQUENCE

- C-1-2-6
- C-3-4-5



RENEW CABLES FOR ALL SIGNAL POLES

1:100 @ A1  
1:200 @ A3

REVISION	AMENDMENT	APPROVED	DATE
A	DRAFT FOR COMMENT	C.G.	2022-12-09

Absolutely Positively  
Wellington City Council  
Me Heke Ki Pōneke



Wellington Office  
+64 4 471 7000

PO Box 12-003  
Wellington 6144  
New Zealand

90% DESIGNS

SCALES			ORIGINAL SIZE	
NOT TO SCALE			A1	
DRAWN	DESIGNED	APPROVED		
C. GAONA DUSSAN	C. GROOM	C. GROOM		
DRAWING VERIFIED	DESIGN VERIFIED	APPROVED DATE		
C. GROOM	J. PAYNE	2022-12-09		

DRAFT FOR COMMENT

PROJECT WELLINGTON CITY COUNCIL MULGRAVE / MOLESWORTH CYCLEWAY		
TITLE MURPHY ST MIDBLOCK CROSSING SIGNALS DETAILS (i=035)		
WSP PROJECT NO. (SUB-PROJECT) 5-C3880.32		
SHEET NO. C112		REVISION A

WORK IN PROGRESS

PRINTED 12/12/2022 2:39:48 pm