

LEGEND

- NEW ROADMARKING
- EXISTING ROADMARKING
- EXISTING NO STOPPING MARKINGS
- ROADMARKING TO BE REMOVED
- NEW UNI-DIRECTIONAL CYCLEWAY
- NEW BI-DIRECTIONAL CYCLEWAY
- NEW RAISED TABLE
- CYCLEWAY SEPARATOR

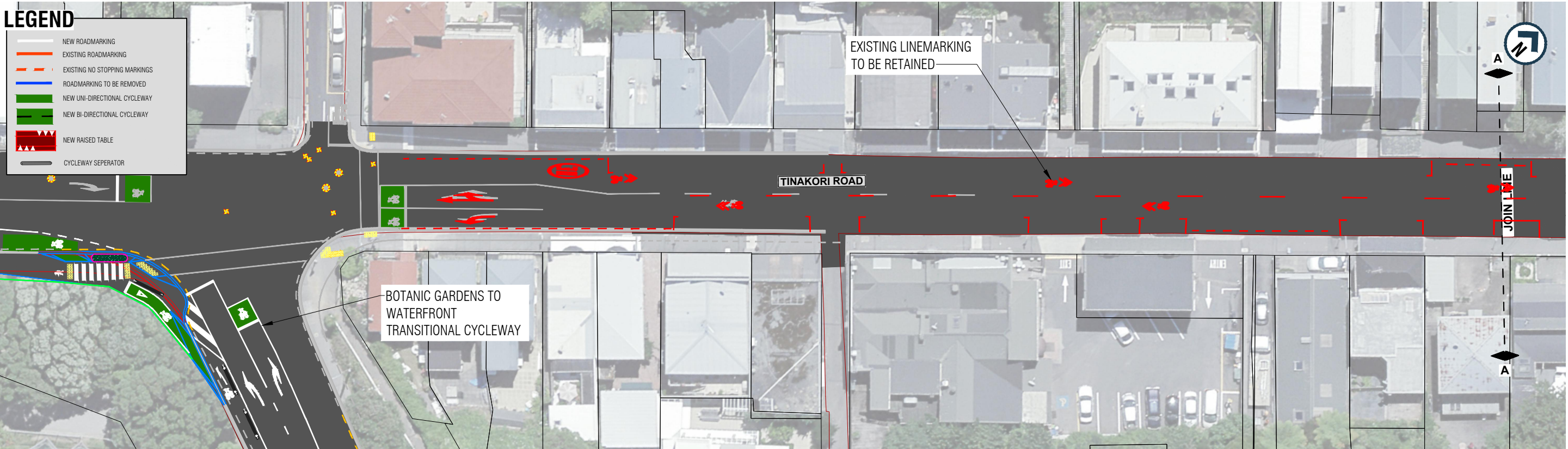
300 mm

200

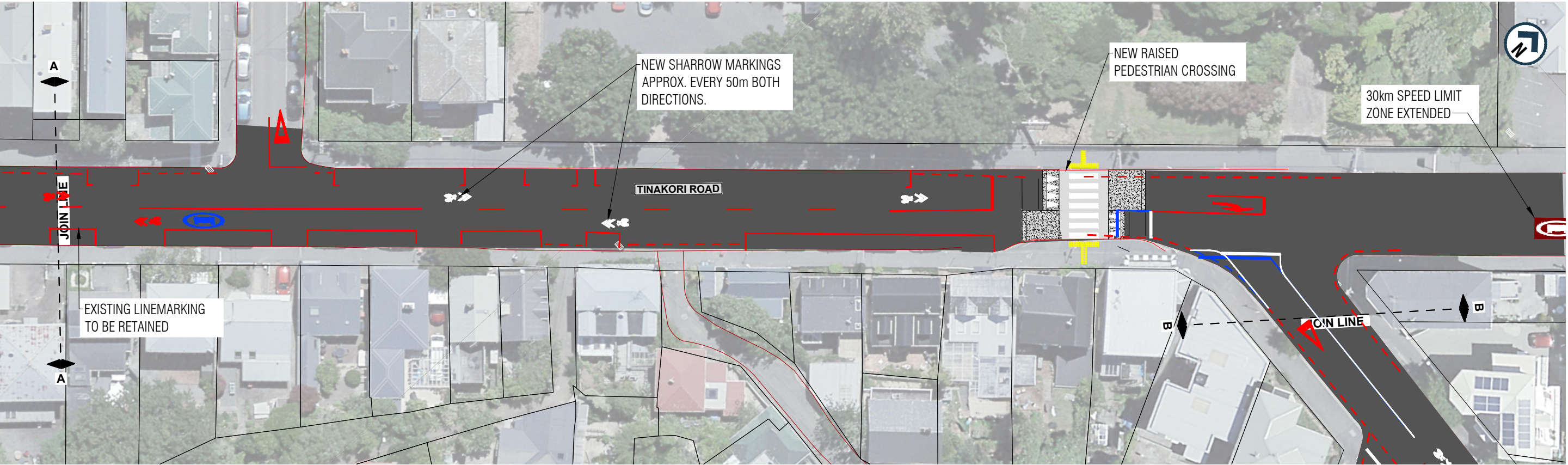
100

50

0 10 mm



TINAKORI ROAD - PART 1



TINAKORI ROAD - PART 2

WORK IN PROGRESS

PRINTED 9/12/2022 12:05:49 pm

1:250 @ A1
1:500 @ A3

REVISION	AMENDMENT	APPROVED	DATE
A	DRAFT FOR COMMENT	C.G.	2022-12-09

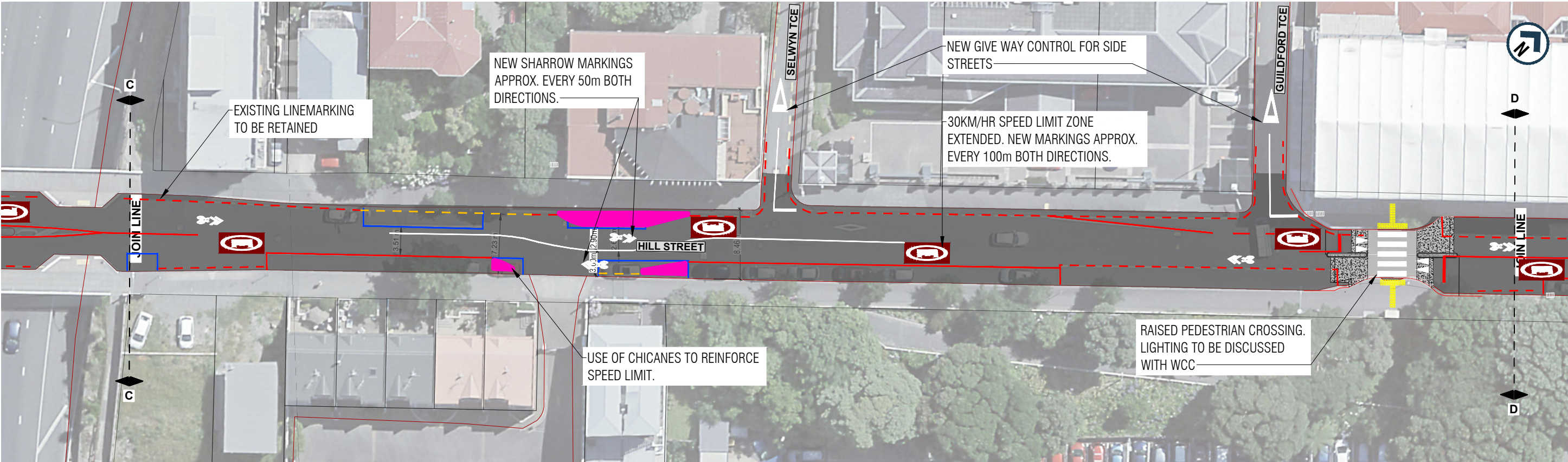
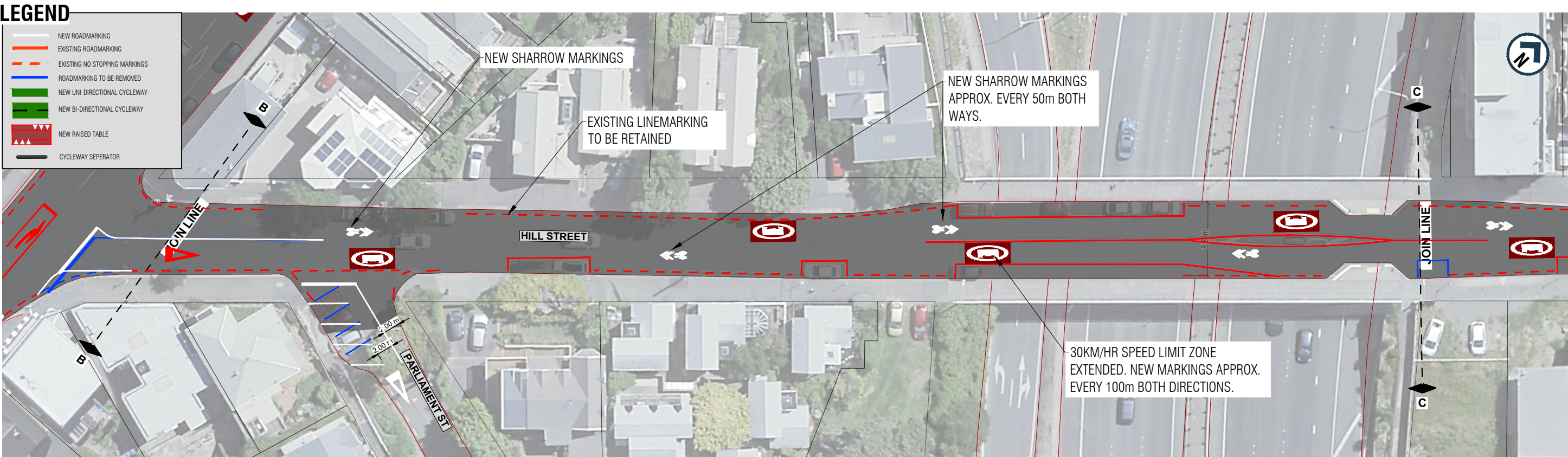


90% DESIGNS

SCALES		ORIGINAL SIZE
1:250 (A1), 1:500 (A3)		A1
DRAWN	DESIGNED	APPROVED
R. NIKKEL	R. NIKKEL	C. GROOM
DRAWING VERIFIED	DESIGN VERIFIED	APPROVED DATE
C. GROOM	P. KORTEGAST	2022-12-09

DETAILD DESIGN

PROJECT			SHEET NO.	REVISION
WELLINGTON CITY COUNCIL				
THORNDON TRANSITIONAL CYCLEWAY				
TITLE				
GENERAL LAYOUT				
TINAKORI ROAD - SHEET 1				
WSP PROJECT NO. (SUB-PROJECT)				
5-C3880.32			C30	A



WORK IN PROGRESS
PRINTED 9/12/2022 2:59:03 pm

REVISION	AMENDMENT	APPROVED	DATE
A	DRAFT FOR COMMENT	C.G.	2022-12-09
B	UPDATE FROM WCC FEEDBACK	C.G.	2022-12-09



Wellington Office
+64 4 471 7000

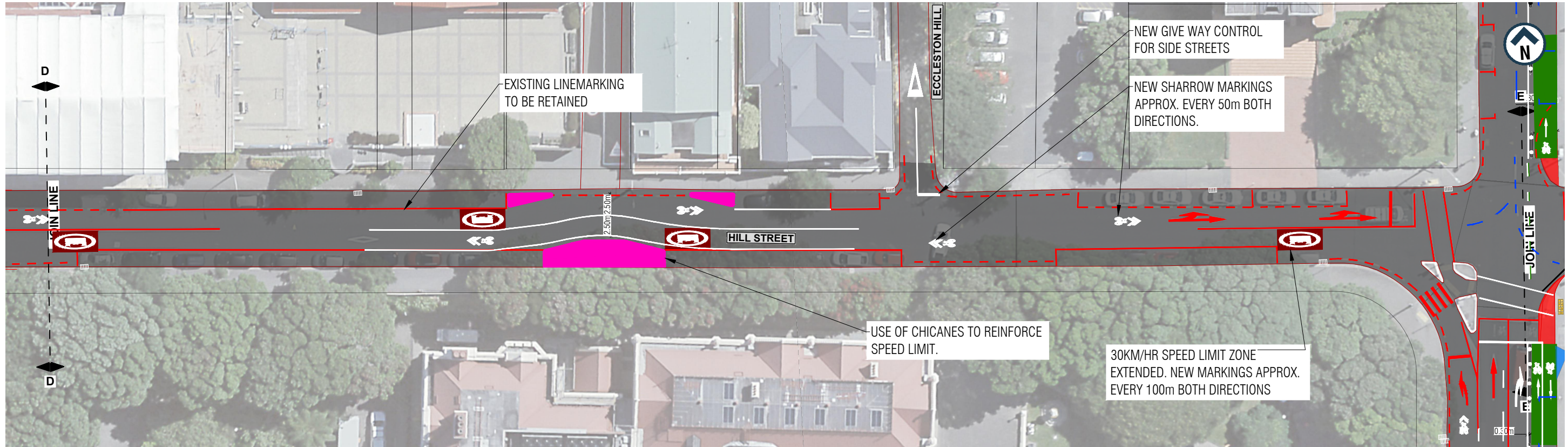
PO Box 12-003
Wellington 6144
New Zealand

90% DESIGNS

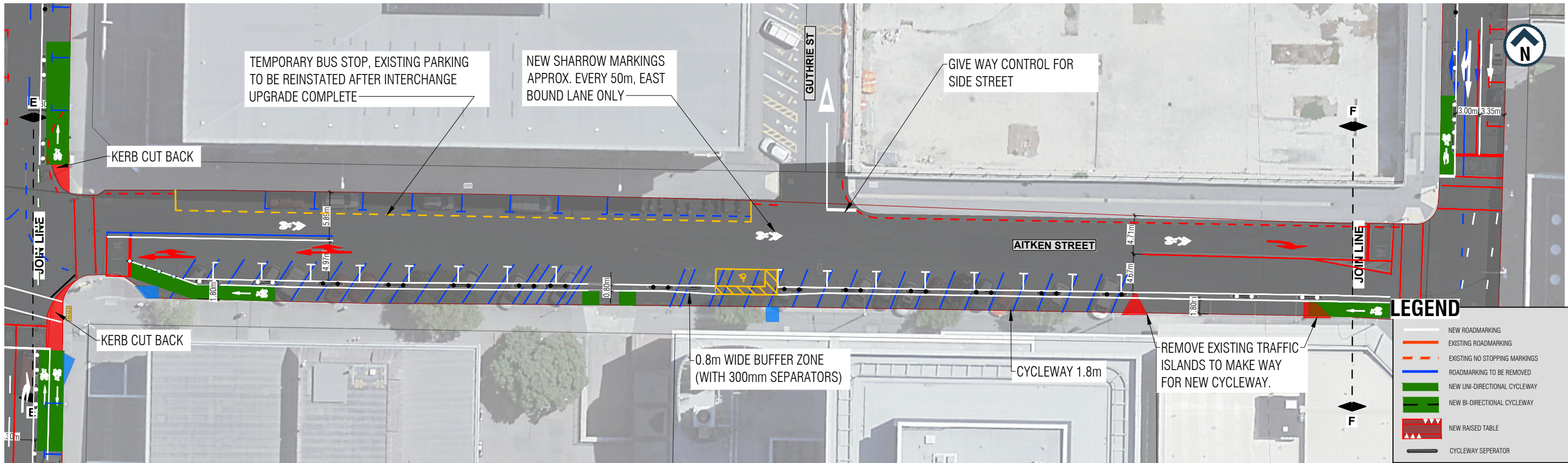
SCALES			ORIGINAL SIZE
1:250 (A1), 1:500 (A3)			A1
DRAWN	DESIGNED	APPROVED	
R. NIKKEL	R. NIKKEL	C. GROOM	
DRAWING VERIFIED	DESIGN VERIFIED	APPROVED DATE	
C. GROOM	P. KORTEGAST	2022-12-09	

DETAILED DESIGN

PROJECT WELLINGTON CITY COUNCIL THORNDON TRANSITIONAL CYCLEWAYS		
TITLE GENERAL LAYOUT HILL STREET - SHEET 2		
WSP PROJECT NO. (SUB-PROJECT) 5-C3880.32		
SHEET NO. C31	REVISION B	



HILL STREET - PART 3



AITKEN STREET - PART 1

LEGEND	
	NEW ROADMARKING
	EXISTING ROADMARKING
	EXISTING NO STOPPING MARKINGS
	ROADMARKING TO BE REMOVED
	NEW UNI-DIRECTIONAL CYCLEWAY
	NEW BI-DIRECTIONAL CYCLEWAY
	NEW RAISED TABLE
	CYCLEWAY SEPARATOR

WORK IN PROGRESS
PRINTED 9/12/2022 12:07:36 pm

REVISION	AMENDMENT	APPROVED	DATE
A	DRAFT FOR COMMENT	C.G.	2022-12-09



Wellington Office
+64 4 471 7000

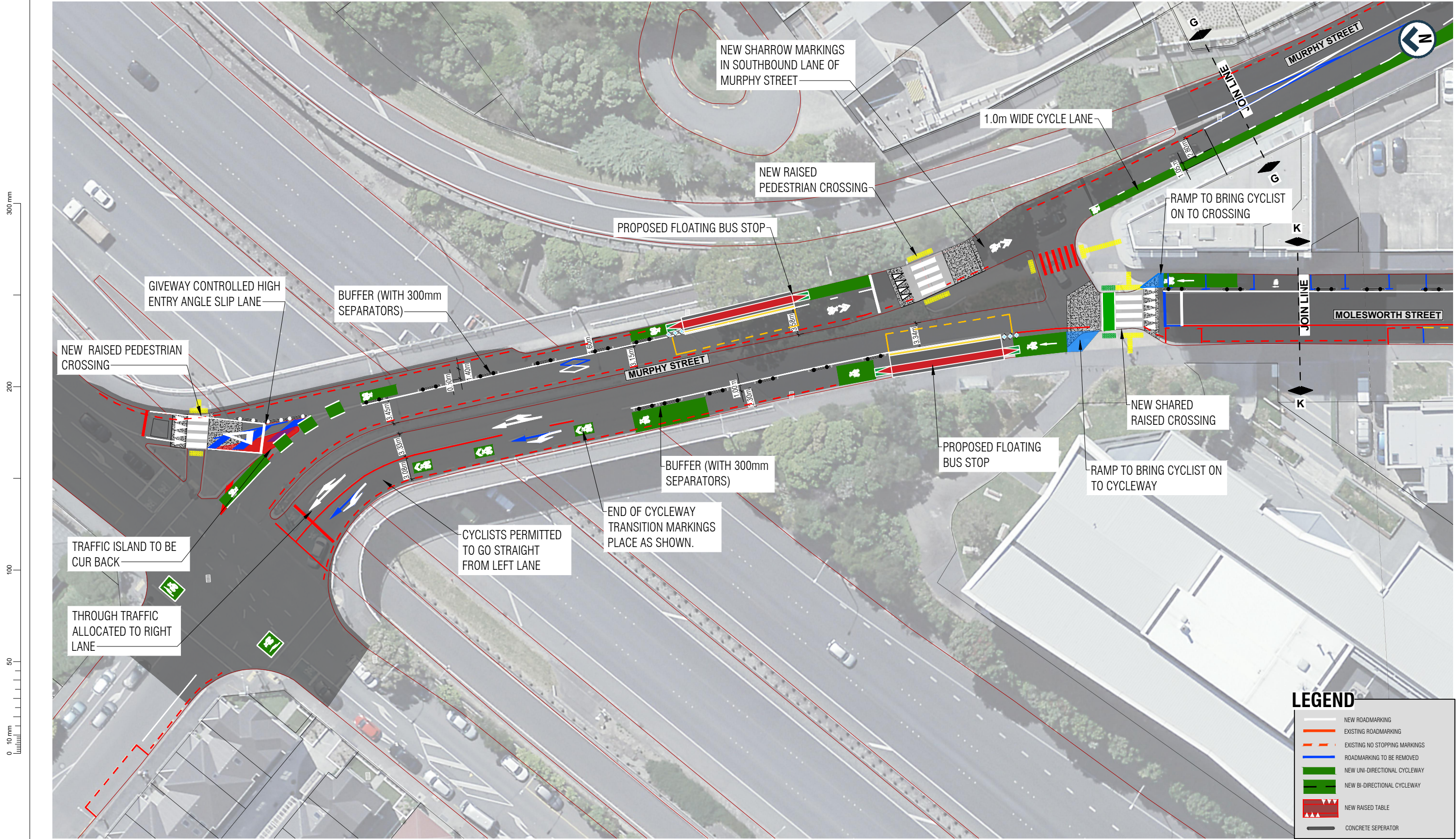
PO Box 12-003
Wellington 6144
New Zealand

90% DESIGNS

SCALES			ORIGINAL SIZE
1:250 (A1), 1:500 (A3)			A1
DRAWN	DESIGNED	APPROVED	
R. NIKKEL	R. NIKKEL	C. GROOM	
DRAWING VERIFIED	DESIGN VERIFIED	APPROVED DATE	
C. GROOM	P. KORTEGAST	2022-12-09	

DETAILD DESIGN

PROJECT WELLINGTON CITY COUNCIL MOLESWORTH / MULGRAVE TRANSITIONAL CYCLEWAYS		
TITLE GENERAL LAYOUT HILL STREET & AITKEN STREET - SHEET 3		
WSP PROJECT NO. (SUB-PROJECT) 5-C3880.32		
SHEET NO. C32	REVISION A	



300 mm
200
100
50
0 10 mm

1:250 @ A1
1:500 @ A3

REVISION	AMENDMENT	APPROVED	DATE
A	DRAFT FOR COMMENT	C.G.	2022-12-09
B	UPDATE FROM WCC FEEDBACK	C.G.	2022-12-09



90% DESIGNS

SCALES			ORIGINAL SIZE
1:250 (A1), 1:500 (A3)			A1
DRAWN	DESIGNED	APPROVED	
R. NIKKEL	R. NIKKEL	C. GROOM	
DRAWING VERIFIED	DESIGN VERIFIED	APPROVED DATE	
C. GROOM	P. KORTEGAST	2022-12-09	

DETAILD DESIGN

PROJECT		
WELLINGTON CITY COUNCIL		
THORNDON TRANSITIONAL CYCLEWAY		
TITLE		
GENERAL LAYOUT		
MOLESWORTH/ MURPHY STREET - SHEET 4		
WSP PROJECT NO. (SUB-PROJECT)		
5-C3880.32		
SHEET NO.		REVISION
C33		B

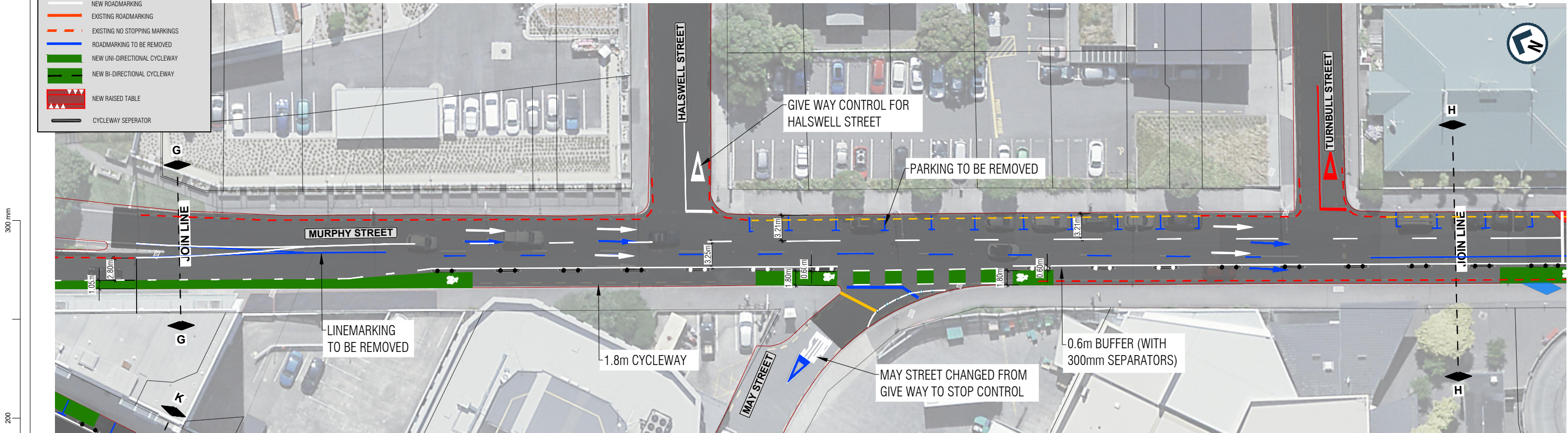
LEGEND

- NEW ROADMARKING
- EXISTING ROADMARKING
- EXISTING NO STOPPING MARKINGS
- ROADMARKING TO BE REMOVED
- NEW UNI-DIRECTIONAL CYCLEWAY
- NEW BI-DIRECTIONAL CYCLEWAY
- NEW RAISED TABLE
- CONCRETE SEPARATOR

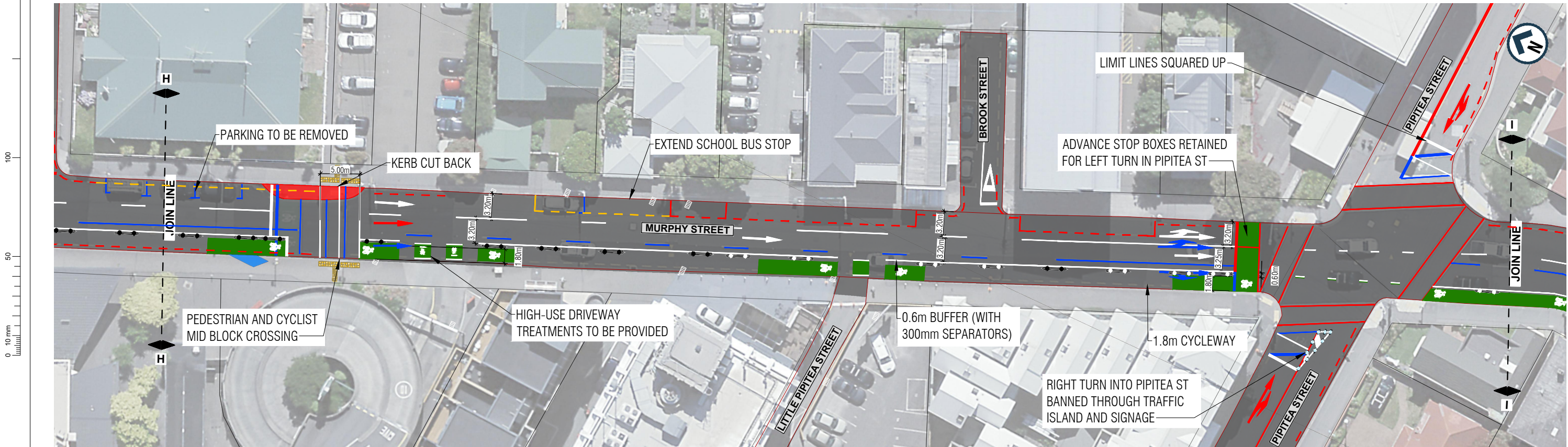
WORK IN PROGRESS
PRINTED 9/12/2022 2:59:59 pm

LEGEND

- NEW ROADMARKING
- EXISTING ROADMARKING
- EXISTING NO STOPPING MARKINGS
- ROADMARKING TO BE REMOVED
- NEW UNI-DIRECTIONAL CYCLEWAY
- NEW BI-DIRECTIONAL CYCLEWAY
- NEW RAISED TABLE
- CYCLEWAY SEPARATOR



MURPHY STREET - PART 2



MURPHY ST - PART 3

WORK IN PROGRESS

PRINTED 9/12/2022 3:01:06 pm

REVISION	AMENDMENT	APPROVED	DATE
A	DRAFT FOR COMMENT	C.G.	2022-12-09
B	UPDATE FROM WCC FEEDBACK	C.G.	2022-12-09

Absolutely Positively
Wellington City Council
Me Heke Ki Pōneke



Wellington Office
+64 4 471 7000

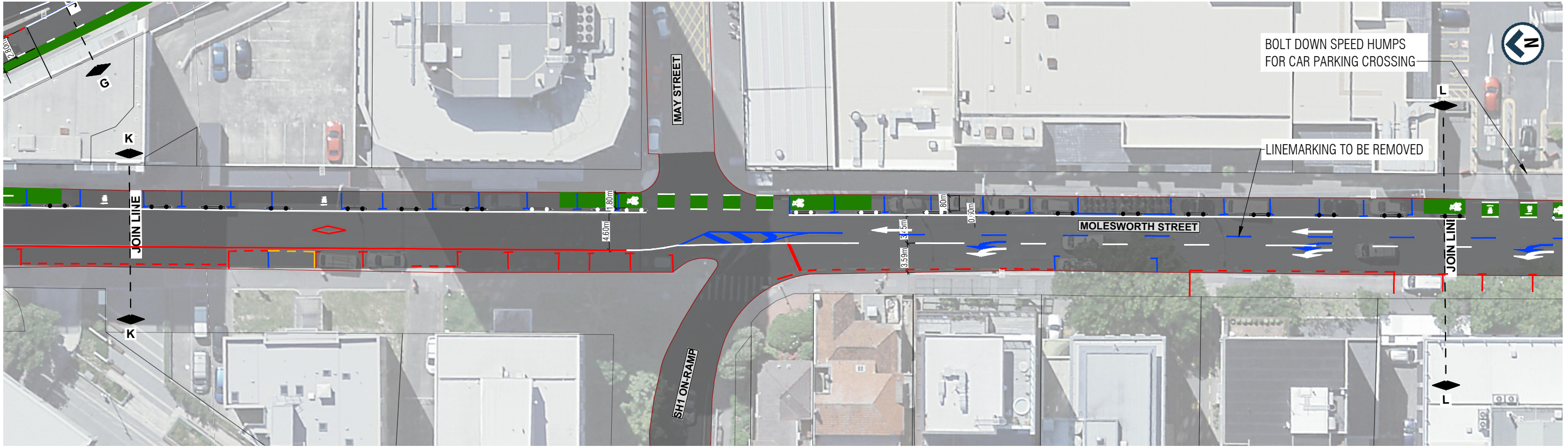
PO Box 12-003
Wellington 6144
New Zealand

90% DESIGNS

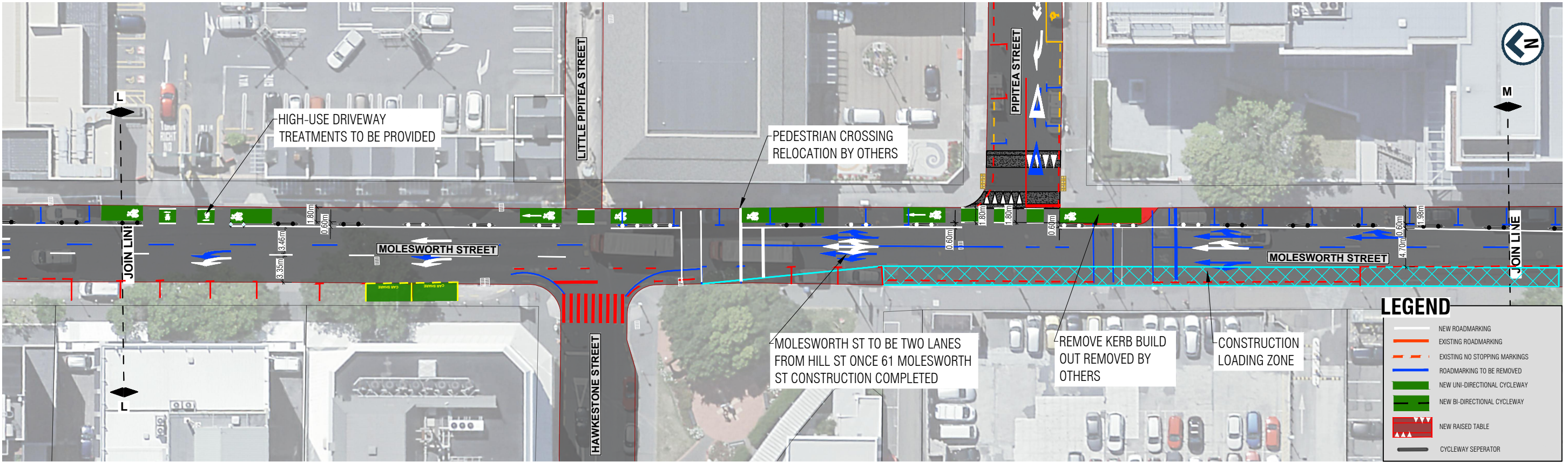
SCALES		ORIGINAL SIZE
1:250 (A1), 1:500 (A3)		A1
DRAWN	DESIGNED	APPROVED
R. NIKKEL	M. JOHNSTON	C. GROOM
DRAWING VERIFIED	DESIGN VERIFIED	APPROVED DATE
C. GROOM	S. THORNTON	2022-12-09

DETAILD DESIGN

PROJECT	WELLINGTON CITY COUNCIL THORNDON TRANSITIONAL CYCLEWAYS
TITLE	GENERAL LAYOUT MURPHY STREET - SHEET 5
WSP PROJECT NO. (SUB-PROJECT)	5-C3880.32
SHEET NO.	C34
REVISION	B



MOLESWORTH STREET - PART 2



MOLESWORTH STREET - PART 3

LEGEND	
	NEW ROADMARKING
	EXISTING ROADMARKING
	EXISTING NO STOPPING MARKINGS
	ROADMARKING TO BE REMOVED
	NEW UNI-DIRECTIONAL CYCLEWAY
	NEW BI-DIRECTIONAL CYCLEWAY
	NEW RAISED TABLE
	CYCLEWAY SEPARATOR

WORK IN PROGRESS
PRINTED 9/12/2022 12:13:55 pm

REVISION	AMENDMENT	APPROVED	DATE
A	DRAFT FOR COMMENT	C.G.	2022-12-09



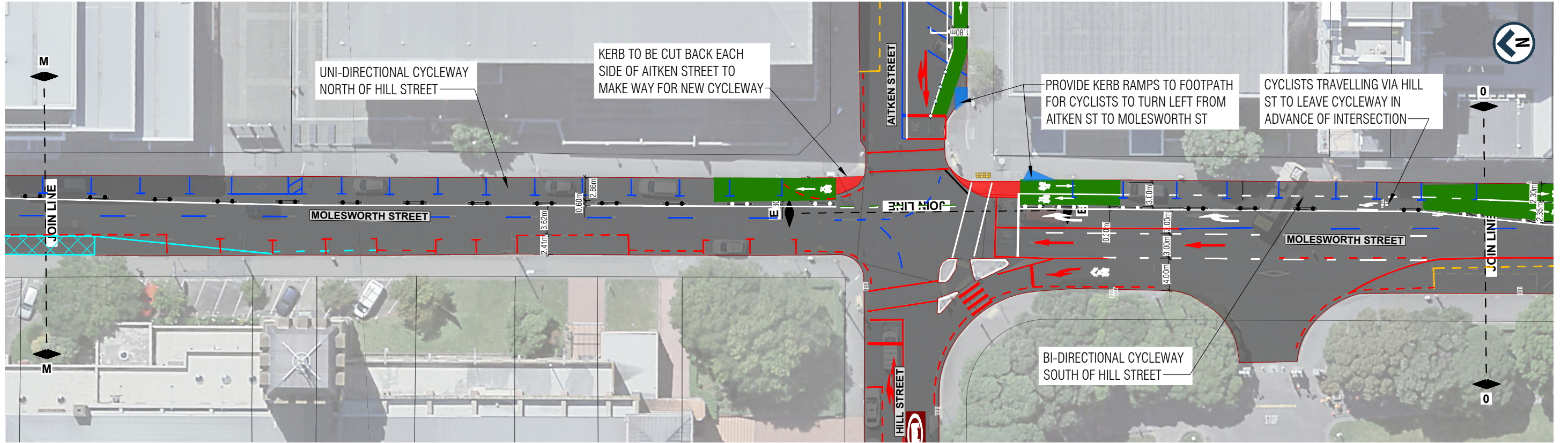
Wellington Office
+64 4 471 7000

PO Box 12-003
Wellington 6144
New Zealand

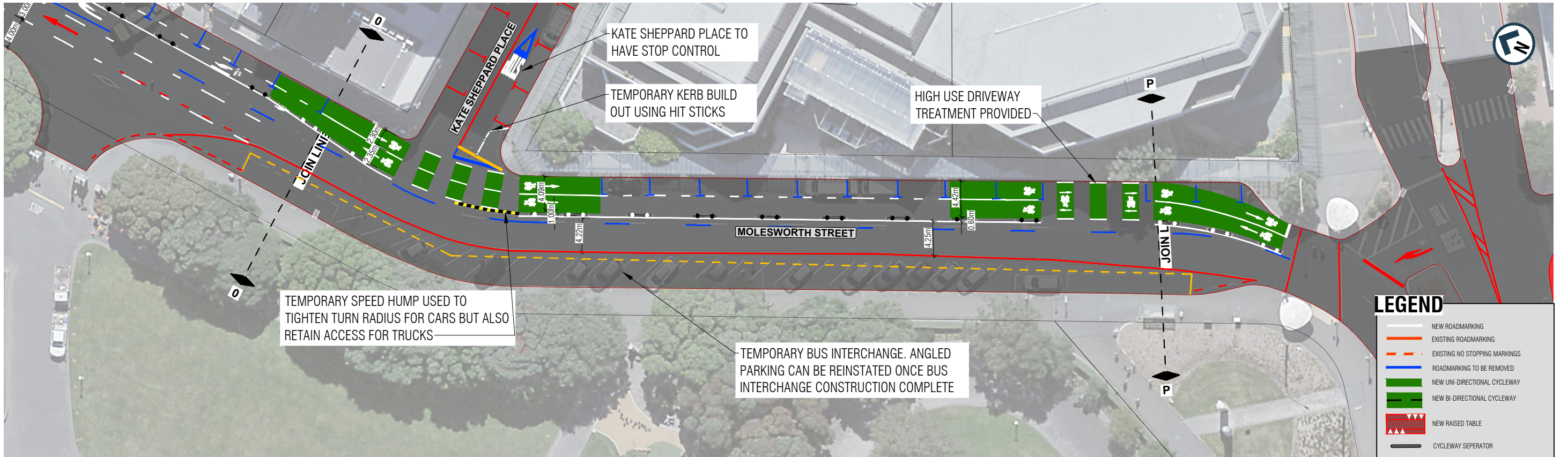
90% DESIGNS

SCALES		ORIGINAL SIZE
1:250 (A1), 1:500 (A3)		A1
DRAWN	DESIGNED	APPROVED
R. NIKKEL	R. NIKKEL	C. GROOM
DRAWING VERIFIED	DESIGN VERIFIED	APPROVED DATE
C. GROOM	P. KORTEGAST	2022-12-09
DETAILD DESIGN		

PROJECT	WELLINGTON CITY COUNCIL THORNDON TRANSITIONAL CYCLEWAYS
TITLE	GENERAL LAYOUT MOLESWORTH STREET - SHEET 7
WSP PROJECT NO. (SUB-PROJECT)	5-C3880.32
SHEET NO.	C36
REVISION	A



MOLESWORTH STREET - PART 4



MOLESWORTH STREET - PART 5

LEGEND

- NEW ROADMARKING
- EXISTING ROADMARKING
- EXISTING NO STOPPING MARKINGS
- ROADMARKING TO BE REMOVED
- NEW UNI-DIRECTIONAL CYCLEWAY
- NEW BI-DIRECTIONAL CYCLEWAY
- NEW RAISED TABLE
- CYCLEWAY SEPARATOR

WORK IN PROGRESS
PRINTED 9/12/2022 12:14:47 pm

1:250 @ A1
1:500 @ A3

REVISION	AMENDMENT	APPROVED	DATE
A	DRAFT FOR COMMENT	C.G.	2022-12-09

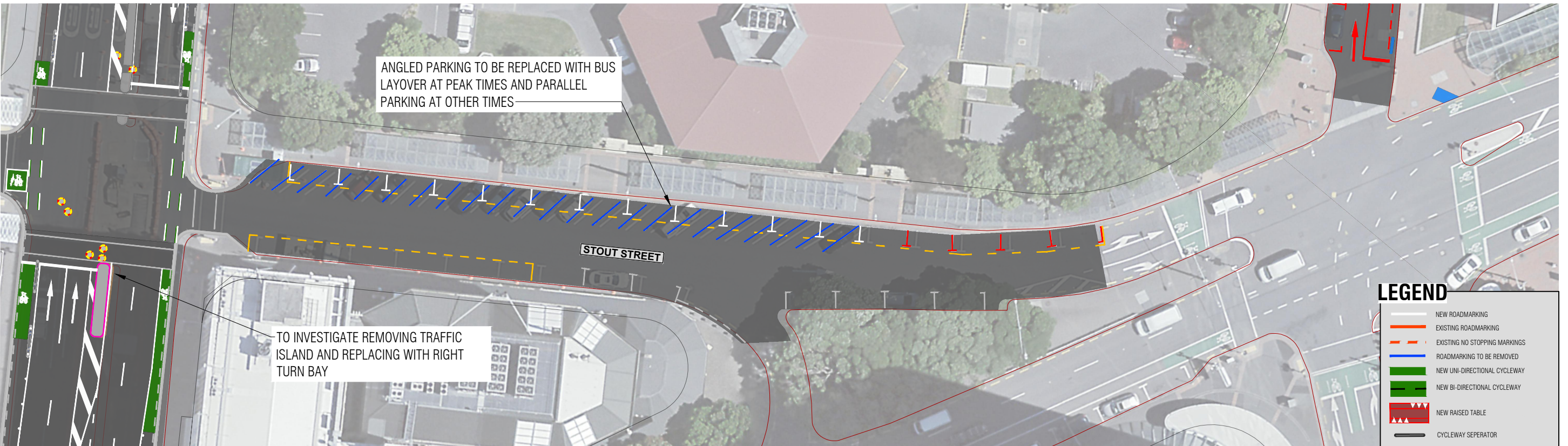
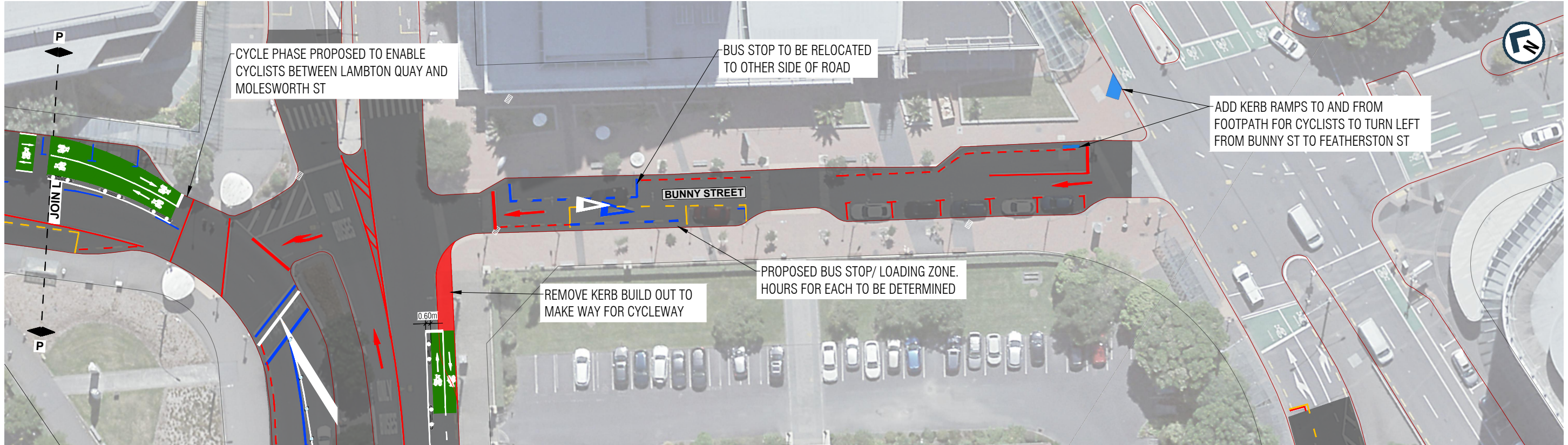


90% DESIGNS

SCALES	DESIGNED	APPROVED
1:250 (A1), 1:500 (A3)	R. NIKKEL	C. GROOM
DRAWN	DESIGN VERIFIED	APPROVED DATE
R. NIKKEL	P. KORTEGAST	2022-12-09
DRAWING VERIFIED		
C. GROOM		

DETAILD DESIGN

PROJECT	WELLINGTON CITY COUNCIL THORNDON TRANSITIONAL CYCLEWAYS
TITLE	GENERAL LAYOUT MOLESWORTH STREET - SHEET 8
WSP PROJECT NO. (SUB-PROJECT)	5-C3880.32
SHEET NO.	C37
REVISION	A



1:250 @ A1
1:500 @ A3

REVISION	AMENDMENT	APPROVED	DATE
A	DRAFT FOR COMMENT	C. G.	2022-12-09



Wellington Office
+64 4 471 7000

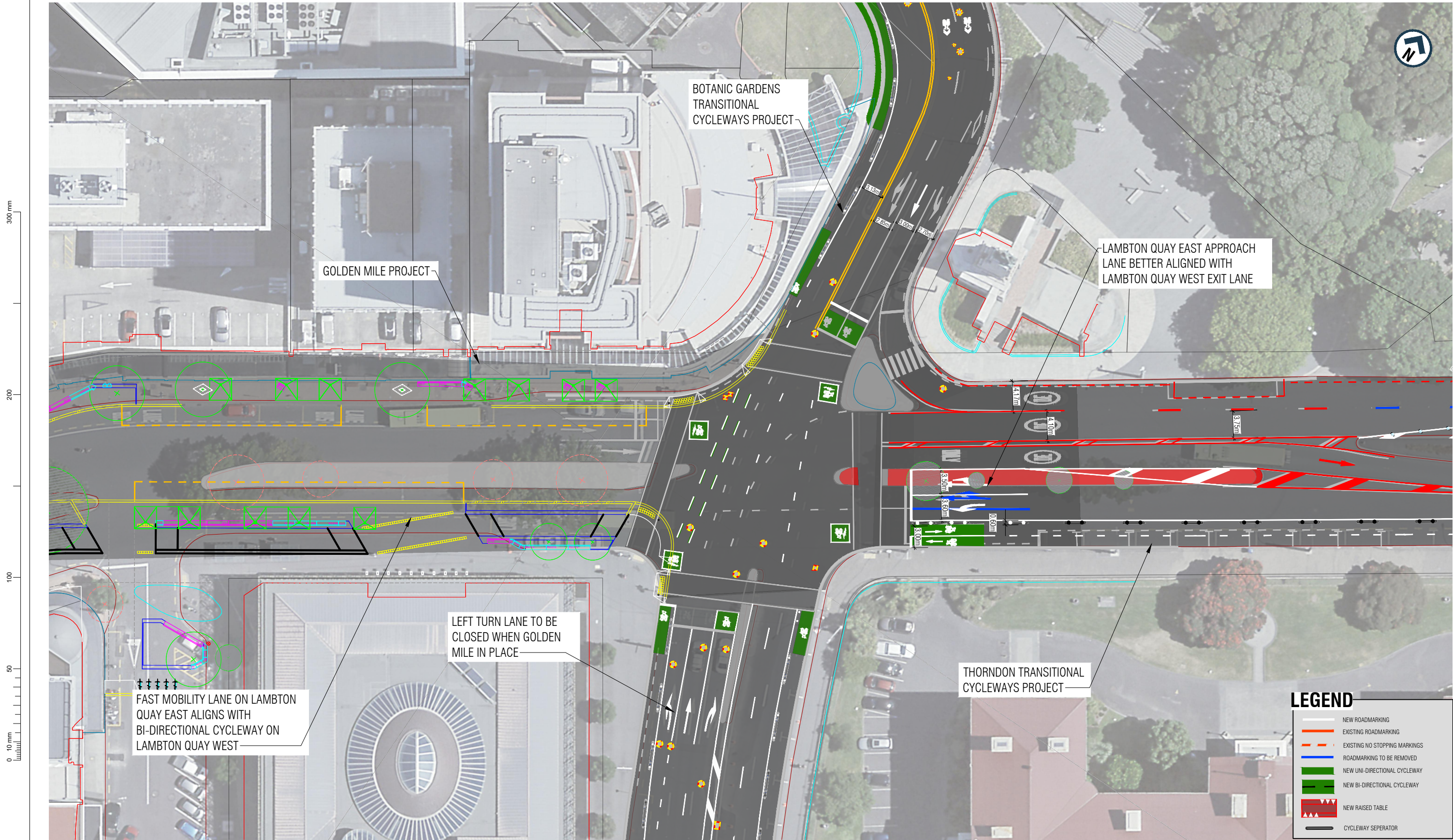
PO Box 12-003
Wellington 6144
New Zealand

90% DESIGNS

SCALES			ORIGINAL SIZE
1:250 (A1), 1:500 (A3)			A1
DRAWN	DESIGNED	APPROVED	
R. NIKKEL	M. JOHNSTON	C. GROOM	
DRAWING VERIFIED	DESIGN VERIFIED	APPROVED DATE	
C. GROOM	S. THORNTON	2022-12-09	

DETAILD DESIGN

PROJECT		
WELLINGTON CITY COUNCIL THORNDON TRANSITIONAL CYCLEWAYS		
TITLE		
GENERAL LAYOUT BUNNY STREET & STOUT STREET - SHEET 9		
WSP PROJECT NO. (SUB-PROJECT) 5-C3880.32		REVISION A



REVISION	AMENDMENT	APPROVED	DATE
A	DRAFT FOR COMMENT	C.G.	2022-12-09





Wellington Office
+64 4 471 7000

PO Box 12-003
Wellington 6144
New Zealand

90% DESIGNS

SCALES		ORIGINAL SIZE
1:250 (A1), 1:500 (A3)		A1
DRAWN	DESIGNED	APPROVED
R. NIKKEL	R. NIKKEL	C. GROOM
DRAWING VERIFIED	DESIGN VERIFIED	APPROVED DATE
C. GROOM	P. KORTEGAST	2022-12-09
DETAILD DESIGN		

PROJECT WELLINGTON CITY COUNCIL THORNDON TRANSITIONAL CYCLEWAYS		
TITLE GENERAL LAYOUT LAMBTON QUAY/ WHITMORE ST/ BOWEN ST - SHEET 11		
WSP PROJECT NO. (SUB-PROJECT) 5-C3880.32	SHEET NO. C40	REVISION A