

16 October 2023

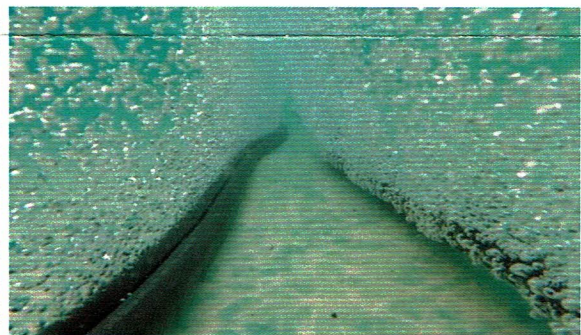
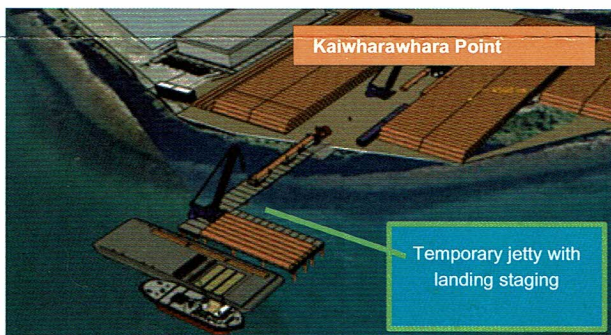
Kia ora Kaiwharawhara resident,

We wanted to let you know about upcoming work on the Wellington Interislander ferry terminal redevelopment to accommodate two new, hybrid-electric ferries that arrive from late 2025.

A Downer HEB Joint Venture team is carrying out the main construction works and is currently constructing a new waiting yard for Interislander private vehicle customers, and next to it, a material storage and site compound office area for the project staff. Towards the end of this month, building will start on a temporary jetty off Kaiwharawhara Point that will be used to transport materials across to the main wharf construction site.

Minimising jetty construction impacts

Jetty construction is expected to take around 12 weeks, during daylight hours. It will include piling works that are likely to generate intermittent noise and vibration. We will ensure measures are in place to minimise disruption and independent monitoring will be done to ensure everything stays well within the noise and vibration limits required by our consent conditions. We are committed to keeping disruption to a minimum.



(l) Kaiwharawhara Point temporary jetty illustration.

(r) A bubble curtain will dampen the sound of piling underwater.

Looking after wildlife during construction is another priority. This includes marine mammal observers, who'll keep a watchful eye out during piling, and a bubble curtain to lessen the underwater noise.

Queries or concerns?

If you have any queries, please email me at brandy.smith@downer.co.nz, phone 0800 DHJV 11 (0800 345 811). We want to make a good impression, and will keep you well informed. Email info@wellingtonferryprecinct.co.nz to receive the project e-newsletter and visit www.irex.co.nz.

Kind regards

Brandy Smith
Communications and Engagement Advisor
Downer HEB JV



Illustrated example of temporary jetty location off Kaiwharawhara Point.